

KAVO

UNIQA

The new premium
compact class.



YOUNIQUE – because it's all about you.

The modern dental practice is more than simply a place for dental treatments.

It's an expression of the individual personality of the dentist – design, equipment, service and the type of consultation and treatment give the practice its unique signature. The very personal ideas of work-life balance, efficiency and enjoyment also fill the treatment rooms.

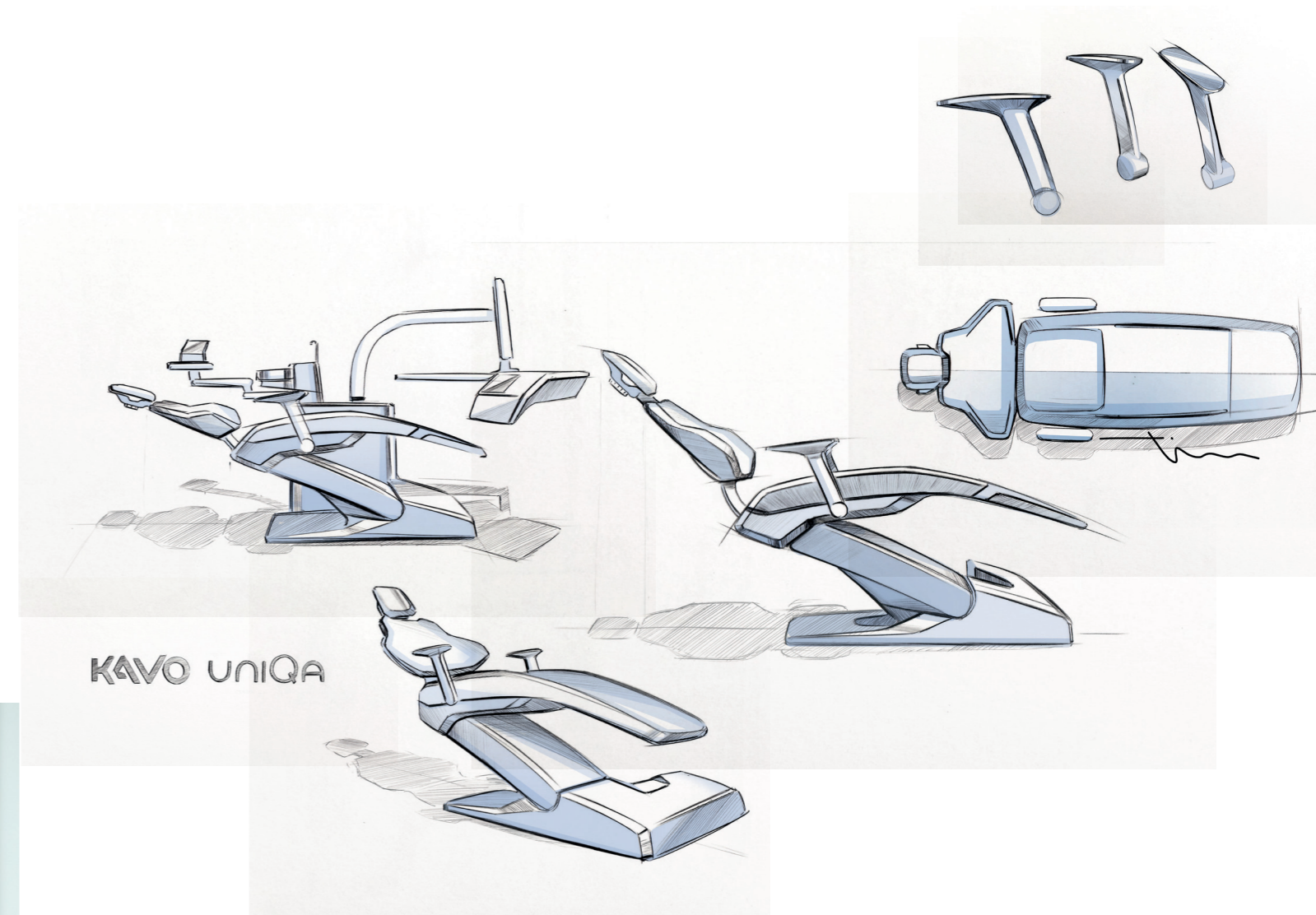
Patients today also expect more than just the status quo – they want to feel understood, comfortable and safe.

At the heart of the practice, the KaVo uniQa meets these needs with perfect precision – from both a technical and an emotional standpoint. Intelligent features plus KaVo's signature precision and overall high quality support successful everyday treatments in the long term. And at the same time the KaVo uniQa leaves enough space for the individual expression of its owner and underlines the dentist's incomparable uniqueness.

KaVo uniQa – when dental excellence becomes personal.

THE REAL KaVo IN ITS MOST BEAUTIFUL FORM.

Design, precision, technology and usability down to the smallest detail – the new KaVo standard is one of a kind.



Intelligent, unique products can only be created with clear goals, a strong passion for the cause, a consistent focus in the right areas and a large dose of team spirit. Products that meet the demands of the modern dental practice. Products that give you joy. Products like the new KaVo uniQa.

Armin Imhof, Chief Technical Officer of KaVo, and Jürgen Hinderhofer, Designer and Managing Director of SLOGDESIGN, hold a moderated discussion to chat about what exactly makes the new KaVo uniQa unique – and they offer an exciting look behind the scenes of the development and design work.



In your opinion, what makes the new KaVo uniQa a "real" KaVo treatment unit?

Armin Imhof (AI): First and foremost, Real KaVo is represented by precision, user-friendliness, value, reliability and, of course, a certain degree of digitisation. A KaVo product is a piece of working equipment at the highest level – something we have emphasised with our new KaVo uniQa treatment unit.

The name uniQa claims to be unique and unmistakably special. Which key aspects would you like to emphasise in this context?

AI: With the uniQa, we have brought the premium level into the medium price segment. The features of our new treatment unit used to only be available in the higher-price segment. We focused on four central topics during development: the patient chair, the hygiene functions, the touch controls and of course the design. These four aspects largely determine the uniQa's unmistakable character. And of course the KaVo-typical workflow was also part of our focus as we strive to avoid dentists having to make unnecessary changes to familiar and well-functioning processes.

Jürgen Hinderhofer (JH): At the design level, it was primarily about offering more technology in an even more compact setting. For example, we have designed a revolving bevel on many components that reduces the volume and models precise edges. This gives the product a high degree of individuality and visualises the well-known KaVo precision.

AI: Basically we can say that despite the numerous technological features, we have developed an intuitive, intelligent, easy-to-use concept and combined this with high-quality design and clear, compact design language. And in the process, the premium functionality and tried-and-tested systems were adopted in the sense of an evolution; new developments and innovations were cleverly implemented. The overall package is simply unique – from both a technological and design perspective.

Time is a valuable commodity – this is no different in dental practice. An efficient workflow and good usability are important criteria for a treatment unit. How do you deal with these topics at KaVo?

AI: At KaVo, we see it as our responsibility to find smart answers for our customers to questions about efficiency. We watch closely how practice teams work and try to make your life easier. One example of this is the magnetic closures for inserting hygienic fluids: the uniQa uses a magnetic system to centre and insert the covers. These are features that not only make the process easier and faster, but they are also simply fun. And in the end, it is precisely these little details that mean the most.

JH: Let's not overlook the hygiene aspects – avoiding joints or edges that are difficult to clean concern the design team and keep them busy during the entire process. In the end, it is always the sum of all well-designed details that result in a successful, harmonious overall picture. That is also part of the quality.



ARMIN IMHOF

” The overall package is simply unique – from both a technological and design perspective. “

You mentioned quality. From your point of view, what makes good quality and how is this reflected in the KaVo uniQa?

JH: In addition to the usability and hygiene issues mentioned, along with the technical features, the way the products feel naturally also plays a role. For example, how do the surfaces or the instruments feel when I take them out of the holder? How does the upholstery material feel? Rather than cold and uncomfortable, the uniQa upholstery feels warm and velvety to the touch. When it comes to the feel of the products, high quality can be felt in the truest sense of the word. So when it comes to the choice of materials, functionality and longevity circle back around to meet value and design. The cover also needs a scratch-resistant, chemical-resistant and UV-resistant material in order to avoid yellowing.



JÜRGEN HINDERHOFER

” The fact is: sustainable, long-lasting products require exceptionally high-quality materials. This is how KaVo quality is created down to the last detail. “

The quality of the materials under the cover also plays a key role – for example, high-quality cast aluminium parts have been used here.

AI: Yes, that's right. Longevity and precision are the result of a high quality product. Longevity ensures a phenomenally good price-performance ratio and as little downtime as possible. Precision makes day-to-day work easier, because for work steps that are repeated hundreds of times a day, precise functionality is the be-all and end-all. The workflow and its ergonomics must also function easily and reliably. A treatment unit stays in a dental practice for up to 20 years – and we want it to bring you joy every day while meeting the high expectations of the practice team.

The subject of customisation is becoming more and more important. To what extent does the demand for individuality influence the design?

JH: Individualisation and individuality can be reflected very well in the design. Individualisation is related, among other things, to the topic of colour. Colour is an important design element and gives rooms their own basic mood. Warm tones have a different effect than cold or pastel hues. We are increasingly aware that consistent colour concepts are implemented in dental practices or that different practice rooms have their own colour concept that sets them apart from other rooms. Here, too, there are many different approaches for implementing your own individual ideas and preferences. But a KaVo uniQa always fits into the picture and can be visually individualised through the choice of upholstery or paint colours.

AI: That's exactly the point. More and more dentists are developing a well thought-out concept for their practices, and the treatment units must be integrated into those concepts. These can be colour concepts, but can also carry special themes such as "tranquillity" or "nature". The uniQa symbolises the uniqueness and individuality of every single dentist – physique and working methods differ from person to person. In accordance with this, there are also numerous options for flexible configuration of the uniQa based on your own preferences. As a premium manufacturer, we have to offer suitable products that meet these requirements for modern practice and modern dentistry.

ARMIN IMHOF

” As a premium manufacturer, we have to offer suitable products that meet the requirements of modern practice and modern dentistry. “



JÜRGEN HINDERHOFER

” Good design is uncompromising, unobtrusive, honest and thought out down to the last detail. In the end, these attributes always reach the patients. “



In addition to the dentists, the focus is also moving more and more to the patient. How does the design of a treatment unit affect the patient?

JH: Good design is uncompromising, unobtrusive, honest and thought out down to the last detail. In the end, these attributes always reach the patient. The KaVo uniQa is pleasantly comforting and exudes trust. The consistent, clear design certainly has some sort of psychological effect.

AI: That is exactly what it's all about. It's about taking a highly complex product with thousands of functions and giving it a simple, pared-back appearance. So it seems more like a piece of furniture. You can clearly see this on the patient

chair, which looks very sleek and tidy – there are no screwed-on elements, for example, but it still has countless functions. And that was the goal: not to be deterred by a military-like design, but to create moments of well-being through the visual appearance.

Finally, if you had to describe the KaVo uniQa in a maximum of three sentences, what would they be?

AI: Outstanding ergonomics in their most beautiful form sums it up for me: the KaVo uniQa is a premium tool with a phenomenal appearance. For me, these two characteristics, ergonomics and design, are also fundamentally the main distinguishing features of a KaVo treatment unit.



KaVo uniQa – the highlights:

The patient chair – ergonomically perfected

1. Modern, inspiring, compact chair design for maximum ergonomics
2. Maximum position of 830 mm and minimum position of 350 mm
3. Integrated Trendelenburg movement for your patients
4. Clear lines via the curved segment with armrests on the side for easy entry and exit
5. Patient weight up to 185 kg

The dentist element – touchingly simple

6. Intuitive operating concept with quick and direct access to all important functions for time-saving and seamless treatment processes
7. Four table versions: from the compact TM, S table and cart variants, which are also suitable for left-handed users, to the even more elegant and ergonomic T-table for right-handed users

Patient communication – direct display

8. KaVo DIAGNOcam Vision Full HD: 3-in-1 intraoral camera for perfected caries diagnosis in full HD
9. High resolution screens: KaVo Screen HD in 22 inches and KaVo Screen One in 19 inches
10. CONEXIO: Data interface for access to patient data directly on the treatment unit
11. Playfully easy and network-independent patient communication with the self-sufficient version KaVo CONNECTbase

Hygiene – efficiently automated

12. Convenient hygiene procedures: integrated rinsing programmes, DEKAmat and OXYmat as well as the hygiene unit with an integrated, removable adaptor for instrument and suction hoses for time-saving, automated cleaning and disinfection

Fully integrated endodontic and surgical functions

13. Endodontic functions with three different modes for file control and an expandable file database with almost 200 pre-set files
14. Surgical function: small and comfortably light surgical motor and integrated saline pump

Accessories – perfectly combined

15. Maximum treatment comfort with KaVoLUX 540 LED thanks to natural light and a uniform light field



JUST FOLLOW YOUR INTUITION.



Find your way around easily and quickly with the self-explanatory user interface on the dentist element with high-quality glass touchscreen. And you can look forward to a smooth, quick and relaxed workflow.

More freedom – for more individuality

The "one-size-fits-all principle" is a thing of the past: your treatment unit should be as individual as you are. Tailor your KaVo uniQa equipment to your own personal requirements – down to the last detail. Thanks to the flexible instrumentation, this is done in a snap: equip the dentist and assistant element to fit you and your team's exact needs. Many functions can be individually adjusted to the practitioner, such as the name, the types of treatment or the direct key assignment on the home screen. And should your treatment focus shift... no problem. Adjustments can be made at any time. For example, upgrading

from five to six racks or retrofitting endodontic and surgical functions are possible changes.

More comfort – for more pleasure

Get comfortable: using the touch display or foot control, you can conveniently access any function or parameter on the integrated special devices that you need during treatment at any time. On the dentist element, you have all the information at a glance at all times. You can also program your individual treatment processes at any time as you wish. Find the position for your dentist element that is comfortable for you.

Sitting or standing. Alone or with assistance. Table, cart or swing arm version. This way you always have everything within reach.

More connectivity – for more flexibility

Using the USB interfaces, you can easily connect additional devices whenever you want. In a matter of seconds, the uniQa treatment system automatically recognises what you have connected. So you can kick back and embrace the future.



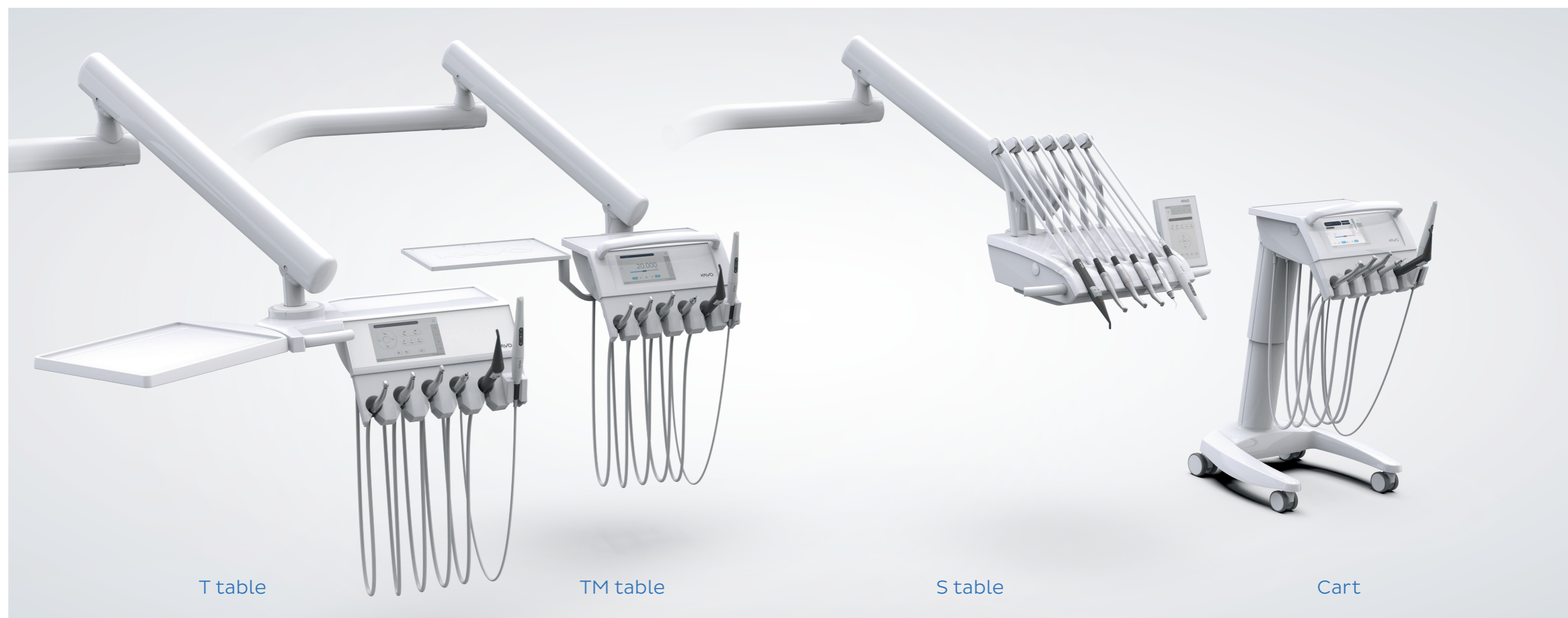
The uniQa user interface in three words: clear, hygienic, efficient.

Everything in its proper place

Whether with five or six instrument racks: each position can be flexibly configured according to your wishes. Or you can simply upgrade from five to six racks later. This is also easily done with the new KaVo uniQa.

Everything saved in one place

Intelligent data memory: quickly and reliably retrieve saved parameters for up to five treatment types for each instrument. For up to six practitioners – the KaVo uniQa makes it possible.



Everything at arm's reach

Sometimes an upgrade is in order: with the T version, comfort and convenience take on a whole new meaning as the handling and accessibility of the dentist element become even easier with the T table for right-handed users. The large tray offers more storage area, and the handle on the dentist's element is removable and also available as a sterilisable version. It's a whole new level of convenience with the KaVo uniQa.

Everything in sight

Fast and easy operation thanks to the intuitive touch display: remove an instrument and all the important information will be displayed at a glance. So you can stay fully concentrated.

Special smart functions – not just for specialists.



It's what's inside that counts – the endodontic function

Thanks to the integrated endo-functions, you'll save on the purchase of an expensive endodontic device: with three different modes for file control and the integrated file database with almost 200 preset files, you can configure, call up and save all important parameters such as translation and torque values directly on the dentist's element. New additional files can be added at any time. This is an endodontic package that is thought out from A to Z.



Oh so bright – the clever surgical option

If you also choose to equip your KaVo uniQa with the KaVo INTRA LUX S600 LED, you'll enjoy unlimited access to all the functions of a modern surgical device in combination with the KaVo surgical instruments and the saline pump integrated on the dentist's element. This makes your work as comfortable as possible.



This is how powerful light can be – the S600 LED surgical motor

The KaVo S600 LED surgical motor has it all: 28% lighter and 20% shorter than its predecessor, it is one of the lightest and smallest surgical motors on the dental market. Pretty strong, that little one.

Holistic in design – with an integrated saline pump

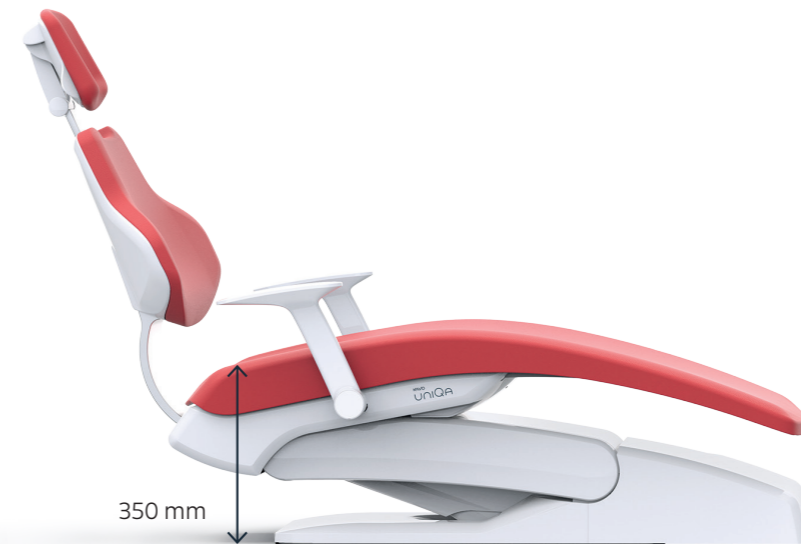
Effective relief and comfort during surgical treatments – the saline pump integrated directly on the dentist element and the holder for the saline solution make it possible. That is 360° of surgical functionality.



KEEP A HEALTHY POSTURE.



Prevent health problems and pain with the KaVo uniQa. Practice your art with as little stress as possible and with a healthy posture. Experience the freedom of natural, intuitive processes. And enable your patients to lie comfortably and relaxed at any time. Because health is the greatest good.



Minimum position of 350 mm and maximum position of 830 mm



Show your greatness

The KaVo uniQa is as flexible as you are individual. Adjust your uniQa not only to your personal requirements and habits, but also to your height. The height of the patient chair can vary between 350 mm and 830 mm, ensuring optimal ergonomic conditions, regardless of whether you perform treatments while sitting or standing. So you can show off your true greatness.

Enjoy your newfound freedom

Now you can move more freely with increased legroom. There's all the space you need under the KaVo uniQa patient chair. You can also position the foot control wherever it's comfortable for you – the compact design of the patient chair and the chair step plate make it possible. For a healthy and relaxed workday and easy access to your patients. For that fantastic feeling of freedom.



The best position ever

The patient positioning of the KaVo uniQa according to Trendelenburg is both comfortable and ergonomic in every treatment position: the footrest inclines and rises automatically to match the inclination of the backrest. This combined movement prevents compression or extension of the patient's back while the backrest is being readjusted. The elevated leg position supports circulation. So you're literally always in the best position.



Get in and out, sure – but go easy

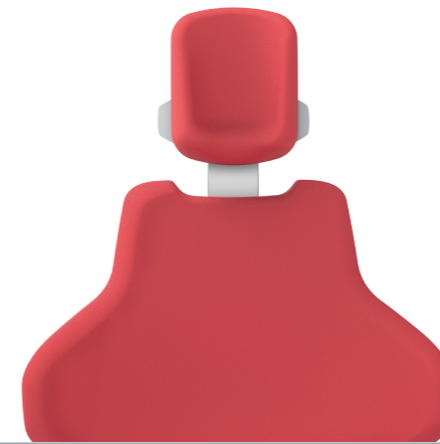
The KaVo uniQa armrests make it easier to get in and out of the chair as they can simply be swivelled downwards. At the same time, they offer support and safety during the treatment without you as the practitioner having to forego maximum freedom of movement. That means optimal comfort for you and your patient from now on.

Perfectly positioned

Depending on the indication or patient size, find the perfect position with the flexible reversible upholstery and the two-joint headrest, allowing your patients to lie in an optimal position and helping you work in a relaxed, concentrated and ergonomic position. Good for you. Good for your patients.

It's all in your head

With the infinitely adjustable tilt angle of the headrest, you can adjust the headrest and thus the position of the head and the mouth. Your patients lie completely relaxed on the comfortable head cushion, and you have permanent and optimal access to your work area. Because comfort starts with the head.



Optimised backrest progress: Optimal working posture and ideal access to the patient's mouth.



Everything at arm's reach: quick-to-use two-joint headrest with push button and a rotatable head cushion.

Left or right? It doesn't matter!

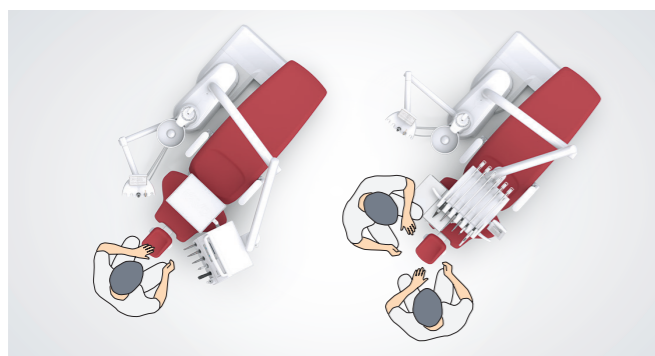


The KaVo uniQa stands for individuality and flexibility. So it's only natural that it's available as both a left or right-handed option. No matter how you decide today, you can always change your mind later. That is investment security à la KaVo.

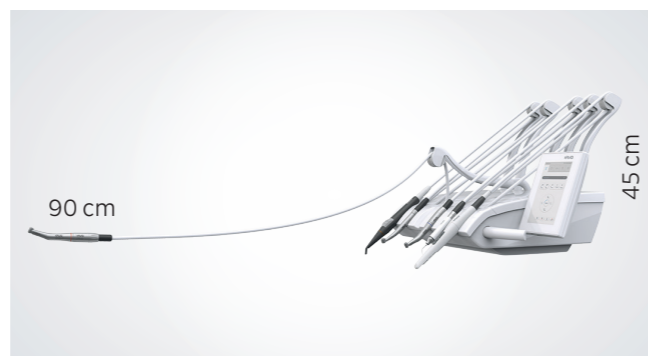
Ergonomically correct from head to toe

Every move is perfect

Enjoy how good it feels to be able to work in an even more relaxed atmosphere with ideal gripping paths. Whether you are practising alone or with your assistant, the dentist element of the table, cart or swing arm version as well as



the tray holder and assistant element can be positioned appropriately according to your wishes, thanks to the large range of motion. The maximum extension length of the instrument hoses of 90 cm and the low table height of 45 cm provide plenty of freedom for treatment with the swing arm version.



Your assistant has everything within reach

The KaVo uniQa assistant element is equipped with a capacitive touch panel and a clear user interface. All central chair, hygiene and operating light functions are available directly and quickly. Instruments can be positioned easily and accurately according to individual habits and preferences. The removable instrument tray ensures optimal hygiene. In addition, the flexible height adjustment and the large swivel range – the assistant element is ergonomics at its finest.



The perfect foot control

Got your hands full during treatment? No problem with the KaVo uniQa. From now on you can easily control all functions and integrated devices with your foot. This also applies to your CONEXIO system software. And by the way, there's also less risk of cross-contamination. Also available as a wireless version for even more flexible placement. So you're in full control.



An efficient workflow means one thing: finding the shortest path possible.

The central starting point

The mainstay for your optimal workflow? The KaVo Centro support system. All important devices are sensibly and ergonomically arranged in one place – so the clever system becomes the centre of your treatment processes, gripping paths and movement sequences. The short-distance principle means you'll always have everything you need in reach. When converting and upgrading to other devices and future technologies, you will enjoy absolute flexibility. Thanks to numerous adaptors, devices and components can be exchanged quickly and easily. For you, this means you can enjoy your optimal workflow with the KaVo uniQa – because what could be better than the feeling of having everything under control?



Can be individually equipped for customised work – the KaVo Centro support system



Intraoral X-rays are always within reach.

Simply install a suitable intraoral X-ray on the light mounting pole with an adaptor and you can take X-ray images that are optimally adapted to the radiological indication directly at the treatment unit – high-precision, time-saving and right next to the patient. It couldn't be easier.

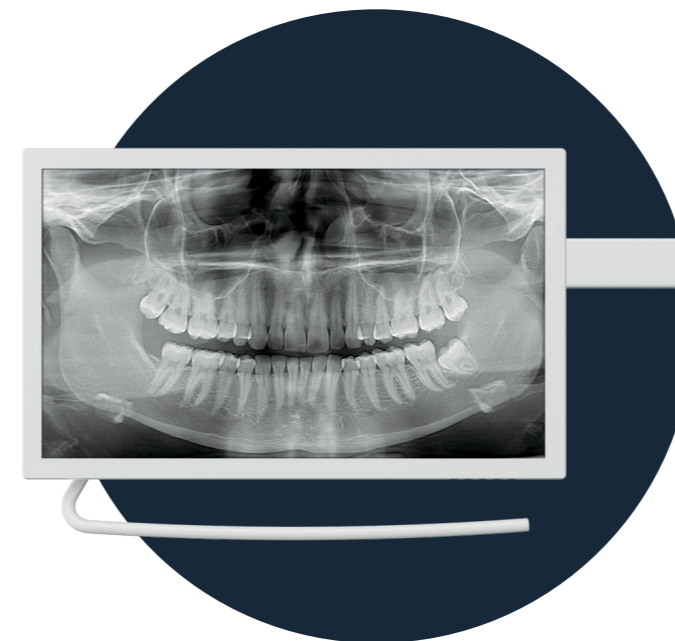
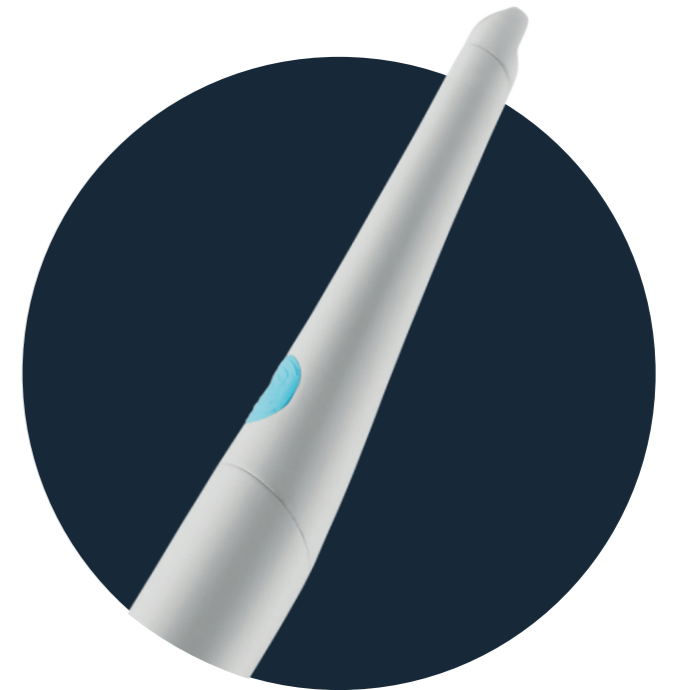
OPTIMAL PATIENT COMMUNICATION AT YOUR FINGERTIPS.



Use the power of images – explain to your patients in detail about the necessary therapy measures, using high-resolution image findings and images in brilliant colour reproduction for patient communication.

KaVo ERGOcam One – small camera, really big impact.

Help your patients understand the dental situation with perfect images offering great depth of field and excellent colour reproduction. The easy-to-use KaVo ERGOcam One provides you with the perfect image at any time. The camera makes it possible to display a sharp image at a distance of 10-25 mm. The shutter release can be triggered by hand or with the foot control.



Show your patients what you've got

Impress your patients with sharp images. The KaVo screens offer you features such as high-resolution image quality, compelling contrast values and brilliant colour reproduction. They are optimally matched to all functionalities of the imaging devices such as cameras or microscopes. For the highest level of hygiene, the screen has a protective glass pane, small gaps on the housing and can be adjusted with one simple hand gesture. Isn't that sharp?

KaVo Screen HD – the perfect choice in Full HD

- Full HD true flat screen
- Aspect ratio: 16 : 9
- Screen diagonal: 22 inches
- Two digital inputs for microscope and PC

KaVo Screen One – the high-quality version in HD

- HD true flat screen
- Aspect ratio: 16 : 9
- Screen diagonal: 19 inches
- Two digital inputs for microscope and PC

DIAGNOcam Vision Full HD. Innovation in its most beautiful form.

Imagine a camera that provides you with three clinically-relevant images for your caries diagnosis – brilliantly sharp at all times and delivered in less than a second. Now it's possible: with the DIAGNOcam Vision Full HD.

Triple diagnostics with one click

Regardless of whether intraoral, transillumination or fluorescence images: The DIAGNOcam Vision Full HD has everything in one device.

Operation via customisable touch panels

The two touch panels on the top and bottom of the camera allow for easy images of the upper and lower jaw. In addition, the functions can be freely adapted to your personal way of working and to suit left or right-handed users.

Light as a feather and perfectly balanced

The low weight and the perfect balance of the camera enable ergonomic handling and fatigue-free work.

Combinable imagery modes

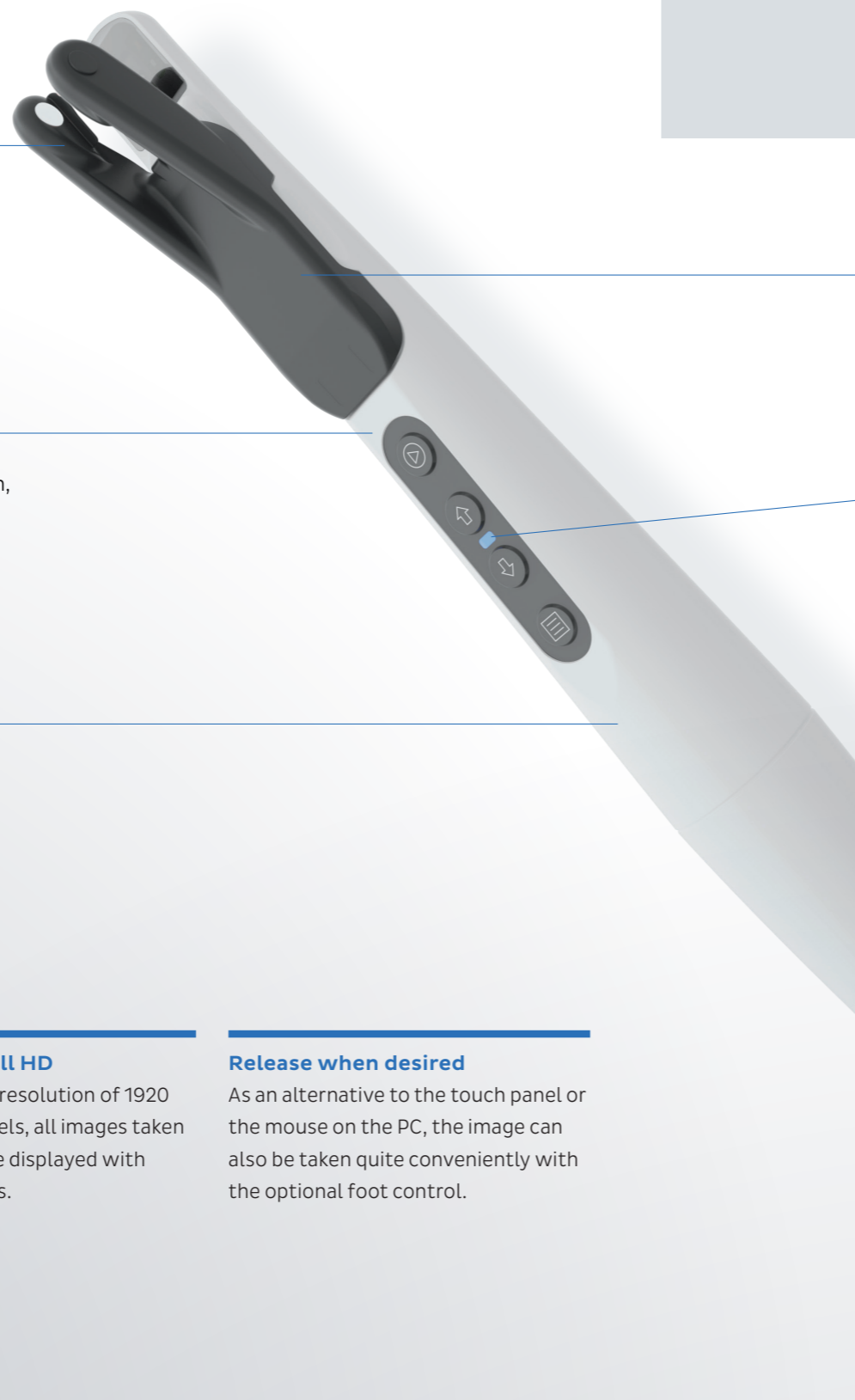
You choose whether you want to take an intraoral, transillumination or fluorescence images – or whether you want to combine two or three exposure modes.

All images in full HD

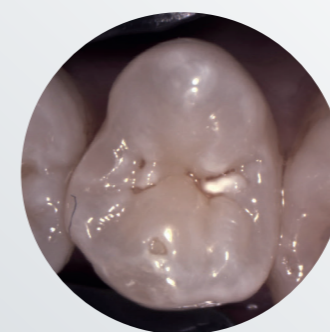
Thanks to the HD resolution of 1920 pixels by 1080 pixels, all images taken at any time will be displayed with brilliant sharpness.

Release when desired

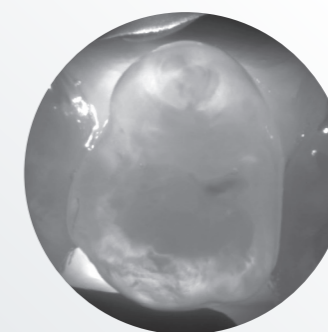
As an alternative to the touch panel or the mouse on the PC, the image can also be taken quite conveniently with the optional foot control.



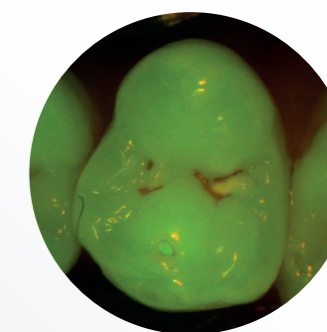
3in1



Intraoral images



Transillumination images



Fluorescence images

See more, show everything: Three-in-one diagnosis at the click of a button

Intraoral images for the first visual caries diagnosis, deep insights into the tooth structure through the transillumination technology and fluorescence images – all with just one single image in real time and in full HD resolution on your screen.

One tip for the entire workflow

You can also use the tip for transillumination images for all other exposure modes. Thanks to the tip's patented design, you'll no longer waste time switching attachments between shots.

Obviously simple operation

The integrated LED shows the camera's status: white for "in operation", blue for "standby", and red for "error".

Permanent autofocus



Jochen Kania
Dentist

"Many cameras offer an auto focus function. But it usually takes too long for the image to focus well enough for a clinically-relevant image. The permanent auto-focus function of the DIAGNOcam Vision Full HD is quite different: it is always on without having to press a button. It's automatically focused at all times – I get a sharp image immediately, without the wait.

The result is a feast for the eyes: it's nearly impossible to take a picture that is not perfectly sharp – in full HD quality. And that applies regardless of whether the DIAGNOcam Vision Full HD is used as an intraoral camera, for transillumination images or in fluorescence mode – or whether all three modes are combined in one image."



The new foundation for your patient communication – integrated, simple and efficient.

KaVo CONNECTbase offers an innovative, easy patient communication workflow – you can use KaVo CONNECTbase to inform your patients about their dental situation on your KaVo uniQa; there's no need to install any additional software. Just connect your camera and get started straight away. The images are displayed directly on the treatment unit's screen and can be compared with past saved images.



The plug-and-play principle – smooth processes made easy

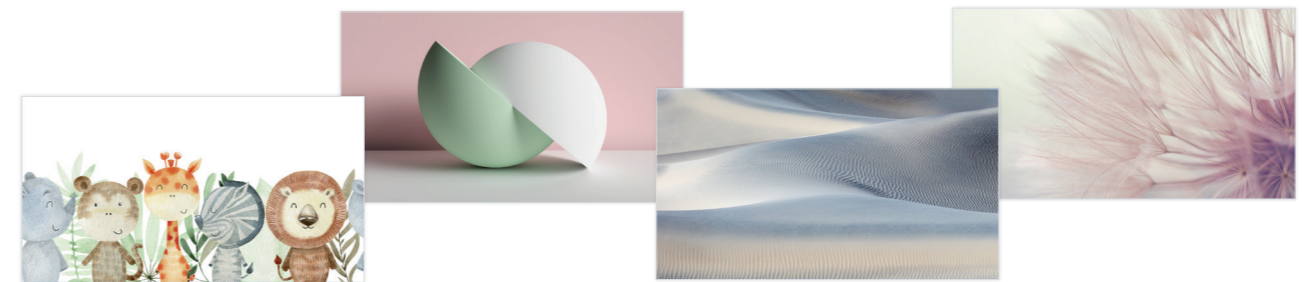
By using the cameras on the KaVo treatment unit, you have instant access to your camera images and can then export them via USB.

Operation via the touch display or the foot control of your treatment unit is just as easy, so there's no need to leave your workplace during the treatment, or to interrupt your process unnecessarily.

Interested in accessing other sources? No problem. By simply switching on the dentist element, various HDMI sources can be displayed on your treatment unit's screen.

Make your treatments a real experience

Make waiting times easier and, if needed, create a welcoming distraction for your patients using visual entertainment right on your KaVo uniQa treatment unit. A great selection of media, including a customisable welcome screen or screen savers with a large selection of photos or slide shows will appeal to your patients, both young and old. Of course, you can also use your screen to promote your own topics of interest or simply share relevant information – in true KaVo uniQa style.



Various themes are available for your screen background to match the design of your practice.



The simple connection of your patient-management-software.

With the new software module CONNECTlink your patient-management-software can be connected with your KaVo treatment unit to enable a simple and fast transfer of patient data and clinical images. Thanks to this link, all relevant data can be directly accessed on the touch display of the dentist element. As usual, new clinical images can be added with the KaVo cameras and will be transferred automatically to the corresponding patient file in the patient-management-software thanks to CONNECTlink.

The new CONNECTlink software can be ordered as a separate module to your existing CONNECTbase patient management system. For the use of CONNECTlink, CONNECTbase and the corresponding CONNECTlink for your KaVo treatment unit are required.



CONEXIO connects what belongs together.

A unique KaVo operating philosophy makes it possible: CONEXIO paves the way for more efficiency in everyday practice. The KaVo software combines patient management software, 2D X-ray image archive and intraoral live images and offers fast, intuitive access. Access all patient data directly on the touch display of the KaVo uniQa. So you'd like to add more data? No problem. Best of all: They are assigned directly to the patient record.

Helpful for your diagnosis – Informative for your patient

Use the opportunity to select and compare images from different sources. All you need to show your patient is the dentist element of your KaVo uniQa – without any keyboard, mouse, tablet or PC.



Perfect overview: The clinical monitoring status

Each image can be assigned to a tooth when the findings are recorded. You can set a clinical monitoring status from "healthy" to "critical". The comparison mode gives you the option of carrying out a progress check with older images of the tooth or images from other sources while the diagnosis is still in progress.

A sound treatment concept

With CONEXIO everything is exactly where you need it: directly on your KaVo uniQa dentist element. The user-friendly user interface via the uniQa touch display guarantees full access to the patient file. And in case you don't have a free hand: all central CONEXIO functions can also be controlled and activated using the foot control. Very convenient and hygienic.

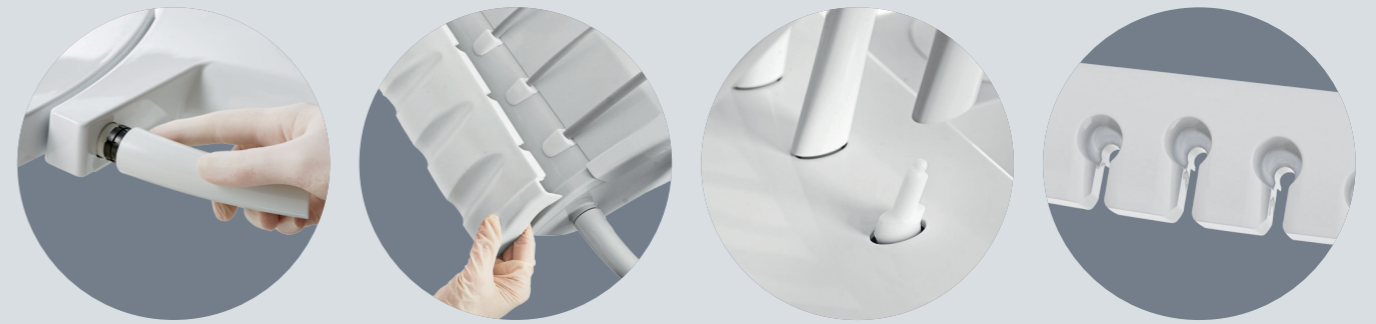


Comparison of KaVo patient communication systems

	KaVo CONNECTbase	KaVo CONNECTlink	KaVo CONEXIO
Product description	Autonomous system – Integrated into your KaVo treatment unit	Software installation on the back-end PC Add-on to your CONNECTbase*	Software installation on the back-end PC
Does software need to be installed on the PC?	No	Yes	Yes
Automatic integration of your practice management software	No	Yes	Yes
Availability of media (e.g. screen saver, KaVo themes, welcome screen)	Yes	Yes	No
Switching between sources directly on the dentist element of the treatment unit	Yes (2x HDMI)	Yes (PC content)	No
Images are displayed directly on the treatment unit screen	Yes	Yes	Yes
Image can be compared with previous images	Yes	Yes	Yes
Automatic image transfer	Yes	Yes	Yes
Operation	<ul style="list-style-type: none"> • Dentist element touch display • Treatment unit foot control 	<ul style="list-style-type: none"> • Dentist element touch display • Treatment unit foot control • PC (mouse, keyboard) 	<ul style="list-style-type: none"> • Dentist element touch display • Treatment unit foot control • PC (mouse, keyboard)
Compatible cameras	<ul style="list-style-type: none"> • KaVo ERGOcam One • KaVo DIAGNOcam Vision Full HD 	<ul style="list-style-type: none"> • KaVo ERGOcam One • KaVo DIAGNOcam Vision Full HD 	<ul style="list-style-type: none"> • KaVo ERGOcam One • KaVo DIAGNOcam Vision Full HD
Remote access + treatment unit updates	Yes (LAN)	Yes (LAN)	No

* Your CONNECTbase can be used as an autonomous system further on. If you would like to connect your CONNECTbase with your patient-management-software, the CONNECTlink software and the corresponding license for your KaVo treatment unit can be ordered.

HYGIENE MADE EASY.



Handles, instrument trays, cuspidors, swing arm bars and silicone mats are easy to remove and disinfect. To prevent dirt from entering your treatment unit, all upper and lower parts of the housing are completely enclosed. The suction filters can be changed easily and safely thanks to the hygienic handle.



When practical intelligence meets safer hygiene.

Depend on the reliable, automatic cleaning and disinfection of suction and instrument hoses. The hygiene unit is integrated in the device body of the KaVo uniQa. Here you can connect both suction hoses and instrument hoses – very easily and with little effort. The hygiene unit can be removed and thermally disinfected.

The power of water

Purification with the power of water. With the KaVo uniQa, the automated HYDROclean programme for effortless cleaning of the amalgam separation, suction and drainage systems is automatically combined with the instrument rinsing programmes. This helps you avoid downtimes and costs for the maintenance of your treatment unit.

Cleaning your KaVo uniQa is very easy: simply remove important components for disinfection. All surfaces are easy to clean and the rinsing of the instruments as well as the cleaning and disinfection of the suction hoses is automated. This keeps you safe on all levels.



Protected water supply system

Protect your water supply system with the anti-suckback retraction on KaVo instruments and motors. This function prevents contaminated spray water from being drawn back into the treatment unit.



Save time with the ready-to-use mixed KaVo DEKASEPTOL Gel. The gel, which can be used directly, wets suction hoses and systems and adheres to the critical points instead of simply being flushed through.

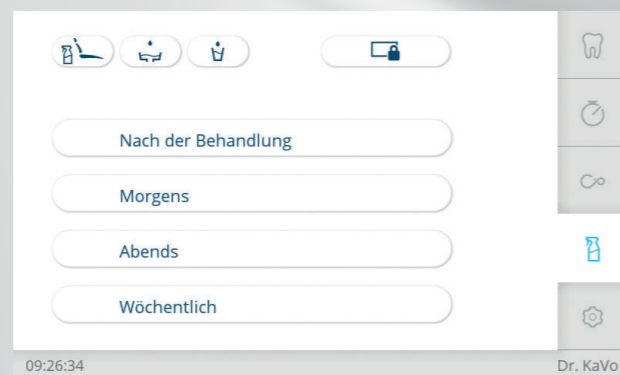
So germs don't stand a chance

Protect your KaVo uniQa's cables from contamination. The water block with free water inlet meets the DVGW standard's strict requirements. In addition, permanent germ reduction with KaVo OXYGENAL 6 ensures that no microorganisms spread during normal practice operation. With the intensive germ reduction

programme ("Weekly" cleaning programme) you not only protect your patients from microorganisms that can form during stagnation times such as on weekends or during closed periods, but you also ensure that the cooling and rinsing fluids are of perfect quality. For safety at all times.

Automatic flushing programmes according to RKI guidelines

Minimise risks in accordance with RKI specifications – with the preprogrammed cleaning programmes, reprocessing your KaVo uniQa becomes child's play. Whether in the morning, after each treatment, in the evening or weekly. The hygiene tab explains step by step how to prepare the unit. The programmes then take care of rinsing and cleaning by themselves.



Pure joy

For the standardised, effective cleaning and germ reduction of the suction channels, the DEKAmat has the DEKASEPTOL bottle integrated into the device body. The permanent and intensive germ reduction of patient water with the OXYmat works just as effortlessly, because the OXYGENAL 6 bottle is also placed in the device body. The respective agent is automatically dispensed in the perfect dosage. This eliminates the labour-intensive and time-consuming manual processing and the risk of incorrect dosing. In addition, contact with the chemicals is avoided.

ONE-OF-A-KIND ACCESSORIES & EQUIPMENT.



Make your KaVo uniQa your personal, one-of-a-kind tool: combine accessories individually with the mix and match principle – for more individuality and fun at work.



Power and performance, optimally balanced

With the PiezoLED ultrasonic scaler, dental cleaning can be done with the highest precision and in a time-saving manner: linear oscillating titanium sonotrodes ensure particularly effective treatment. Teeth and gums remain untouched even in filigree areas, as circular light emissions allow you an optimal view. Thanks to the lightweight, ergonomic design, you can work with extreme precision and without getting tired.

The KaVo SONICflex is the universal genius for almost all indications: thanks to its diverse possibilities, it could be one of your most widely used instruments: with over 50 tips that can be changed with just one single twist, it is perfect for all areas of application, such as prophylaxis, endodontics, periodontology, minimally invasive caries therapy, surgery or dissection.

Practice what you preach

When it comes to instruments, you shouldn't settle for less than the best: The KaVo MASTERmatic series covers all areas of application, offers you the best view and optimal access to caries – giving you the freedom to consistently provide treatment with the highest quality and precision. Especially in combination with the extremely compact, lightweight and smooth-running INTRA LUX KL 703 LED micromotor, thanks to SMARTdrive, you can work with particular efficiency and free from fatigue over the entire speed range of 100 to 40,000 rpm.



Perfect light for a perfect view.

Operate the KaVoLUX 540 LED via the intuitive dentist element or via the contactless gesture control. Switching on and off is also possible with your KaVo uniQa's automatic positions. Optimally tailored to your uniQa, the KaVoLUX 540 LED is fully compliant with hygiene requirements, and offers the highest KaVo quality, a long service life and maximum treatment comfort.



15,000 lux and optimal work

A common problem: if the operating light is not dimmed, composite often hardens too quickly. But that's not the case with the KaVoLUX 540 LED. The innovative COMPOsave™ mode (compatible with light-activated restoration materials) filters out all blue components of the light, slowing down the hardening of the filling material. In this way, light-curing materials can be processed slowly without having to dim the light. With a brightness of 15,000 lux you always have optimal visibility for ideal treatment and excellent results in series.

Natural light of the highest quality



Contact-free operation



COMPOsave mode



A perfect fit.

For you as a dentist it is particularly important to adopt a permanently ergonomic, healthy and comfortable posture in every treatment situation. Nothing affects your posture as much as the work chair you sit on every day. The KaVo PHYSIO Evo and Evo F are precisely tailored to the needs and workflows of dentists and assistants.



Ergonomics and comfort down to the last detail

Thanks to separate adjustment functions, adjusting the seat and backrest individually to suit your body's needs and your treatment style is a breeze. The back and seat cushions of the KaVo PHYSIO Evo are ergonomically shaped. The centred elevation in the seat cushion offers a stable fit and prevents slipping even with quick, short rolling movements. The rounded thigh support gives you plenty of freedom of movement. Thanks to the spring-supported backrest, your back muscles, especially in the lumbar vertebra region, are permanently and actively supported and thus protected at all times. Smooth work processes and the greatest possible seating comfort are therefore an obvious must for every treatment – for your health and a stress-free work environment.

An exceptional concept

The KaVo PHYSIO Evo treatment chair has been awarded the seal of approval from the "Healthy Back Campaign" (AGR) association. An independent, multidisciplinary Expert Commission bases this award on strict ergonomics and health test criteria.

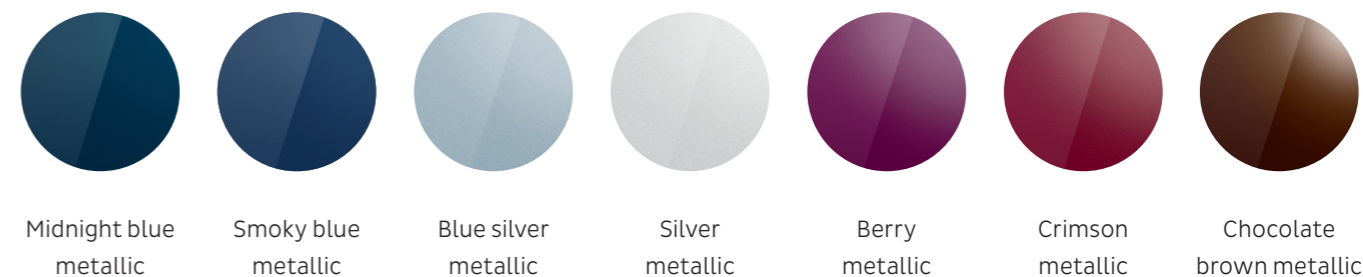


Equipment options

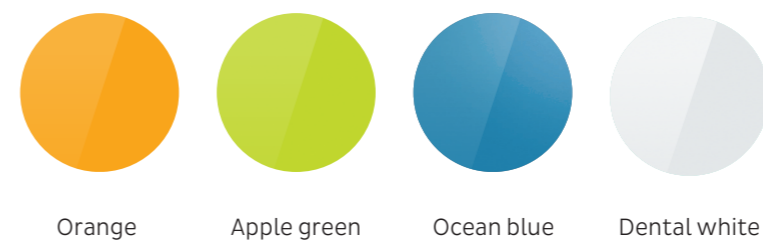
	TM	S	C	T		TM	S	C	T
Patient chair					Tray holder for tray support	○	○	○	○
Soft cushion	●	●	●	●	Swivelling and height-adjustable	●	●	●	●
RELAXline soft upholstery	-	-	-	-	Removable instrument holder	●	●	●	●
					Selective support kit	●	●	●	●
Backrest					Short arm	x	x	x	x
Progress (optimised)	●	●	●	●					
					Device body				
Headrest					Porcelain cuspidor bowl	●	●	●	●
2-joint with rotary knob	●	●	●	●	Smokey grey glass cuspidor	○	○	○	○
2-joint with pushbutton	○	○	○	○	Hygiene centre	●	●	●	●
Comfort head cushion	○	○	○	○	Permanent germ reduction ¹	●	●	●	●
					Intensive germ reduction ¹	●	●	●	●
Armrest					HYDROclean (rinsing system)	●	●	●	●
Left	○	○	○	○	DEKAmat™ and OXYmat	●	●	●	●
Right	○	○	○	○	Hot water boiler	○	○	○	○
					VACUstopp	●	●	●	●
Dentist element					Wireless foot control	○	○	○	○
Touch display	●	●	●	●					
SMARTdrive	●	●	●	●	Supply system				
5 instrument holders	●	●	●	●	DVGW water block	●	●	●	●
6 instrument holders	○	○	○	○	DVGW water bottle ²	○	○	○	○
Removable instrument holder	●	●	●	●	Compact water block ²	○	○	○	○
Turbine hose	○	○	○	○	Connection to external device	○	○	○	○
INTRA LUX Motor KL 703 LED™	○	○	○	○	Vacuum control valve	○	○	○	○
Integrated torque control (endo)	○	○	○	○	CENTRAmat	○	○	○	○
PiezoLED™ ultrasonic scaler	○	○	○	○					
SONICflex™ sonic scaler	○	○	○	○	Disposal system				
Triple-function handpiece	●	●	●	●	External wet suction	●	●	●	●
Multi-function handpiece	○	○	○	○	DÜRR amalgam separator	○	○	○	○
Physiological saline solution	○	○	○	○	DÜRR separator	○	○	○	○
S600 LED surgical motor	○	○	○	○					
Spray heating for instruments	○	○	○	○	Operating light				
USB interface	○	○	○	○	KaVoLUX 540 LED	○	○	○	○
Pneumatic brake for arm system	-	○	-	○	Light mounting post	○	○	○	○
Tray holder for two norm trays	●	●	-	●	Adaptor for additional devices (e.g. for Intraoral X-ray)	○	○	○	○
Service table 1568 for two norm trays	-	-	○	-					
					Patient communication				
Assistant element					KaVo CONNECTbase	○	○	○	○
Capacitive touch panel	●	●	●	●	CONEXIO	○	○	○	○
5 instrument holders	●	●	●	●	KaVo Screen One	○	○	○	○
Spray mist suction	●	●	●	●	KaVo Screen HD	○	○	○	○
Saliva extractor	●	●	●	●	KaVo ERGOcam One	○	○	○	○
2. Saliva extractor	○	○	○	○	KaVo DIAGNOcam	○	○	○	○
Triple-function handpiece	○	○	○	○	KaVo DIAGNOcam Vision Full HD	○	○	○	○
Multi-function handpiece	○	○	○	○					
Polymerisation handpiece Satelec Mini LED	○	○	○	○					

● Series equipment | ○ Optional equipment | x Must be selected | - Not available
¹ only in connection with the DVGW water block and the DVGW water bottle | ² at a reduced price

Metallic paint colours



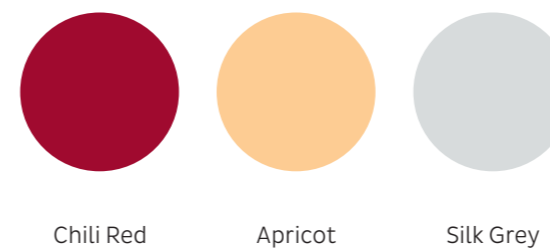
Non-metallic paint colours



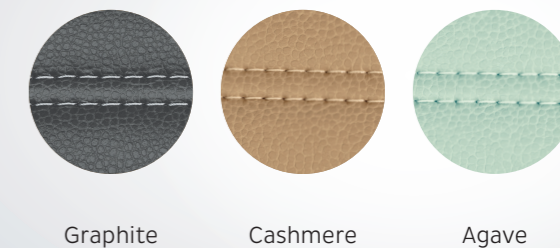
Please note: Print colours do not reproduce a surface that is true to the colour. (Request a KaVo colour card!)



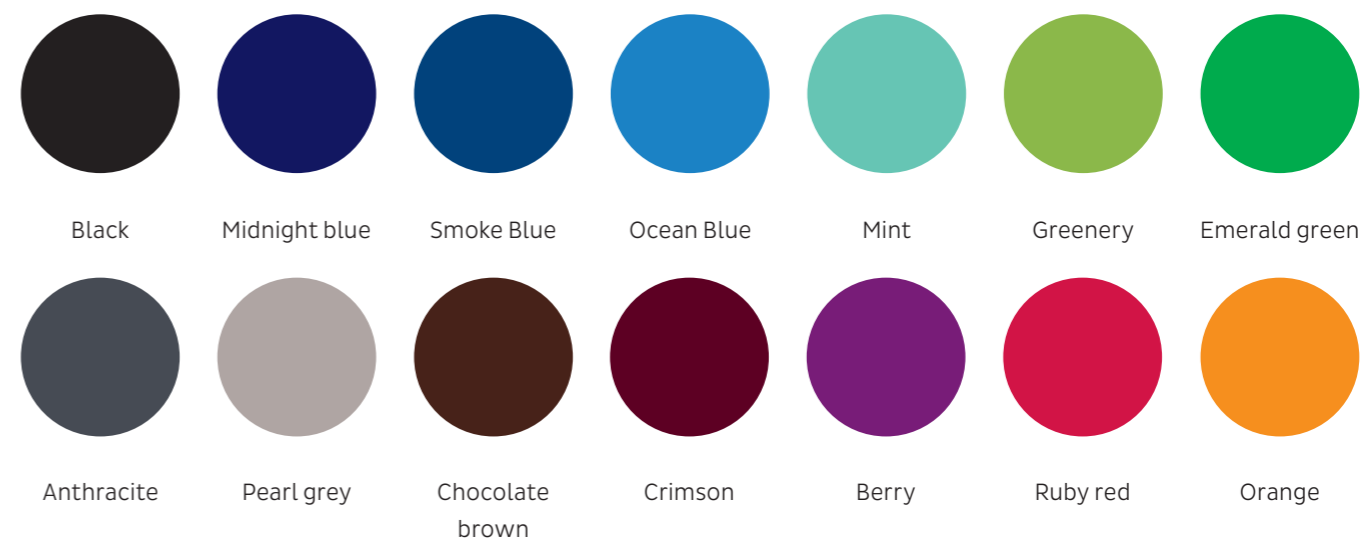
Upholstery colours: exclusively for KaVo uniQa



RELAXline soft upholstery colours



Upholstery colours



Dental Excellence in every area



Practice equipment

KaVo treatment units, treatment lights, practitioners' chairs, patient communication systems and further accessories for the dental practice.



Instruments

Dental straight and contra-angle handpieces, turbines, powder jet handpieces and small devices for all areas of application from diagnostics via prophylaxis to restoration, surgery, endodontics and instrument care and maintenance.

The products, equipment and services shown and described in this catalogue are not available in all countries. All information corresponds to the knowledge available at the time of printing. KaVo Dental GmbH assumes no responsibility for discrepancies in the colour and shape of the images, or for errors or misprints, and reserves the right to make changes to the brochures at any time. Reprinting, even in part, is only authorised with the approval of KaVo Dental GmbH.

KaVo and uniQa are registered trademarks of KaVo Dental GmbH.